

The OnePort programmer from Approved Networks is conveniently small and portable with proprietary software that is both intuitive and easy-to-use. OnePort takes the complexity out of coding, whether programming a single transceiver or an entire batch.

System Requirements:

Windows 10 Pro or Windows 7; other operating systems are not supported at this time

RAM: 4GB minimum

Storage Required: 17MB

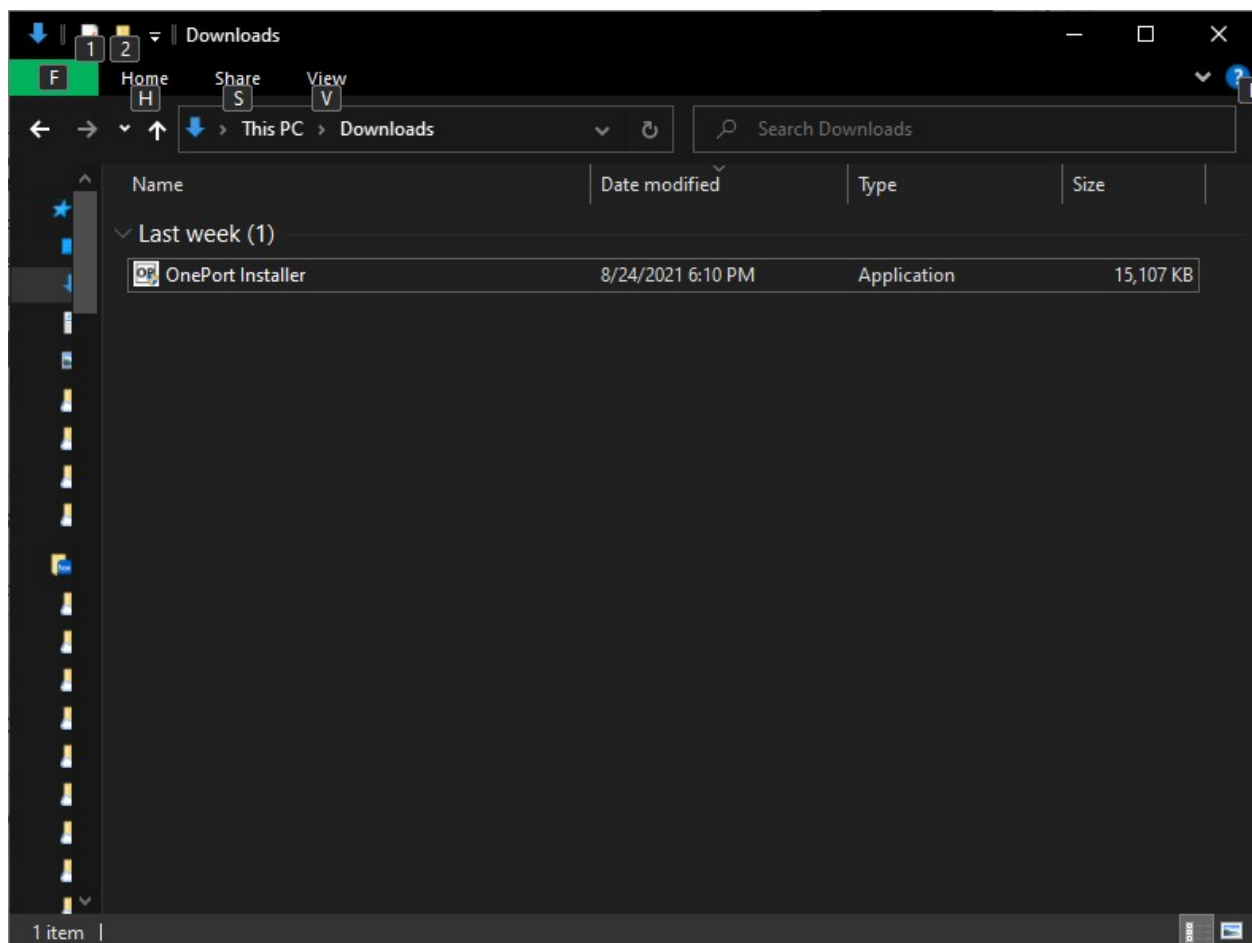
Internet Connection

Download and Installation:

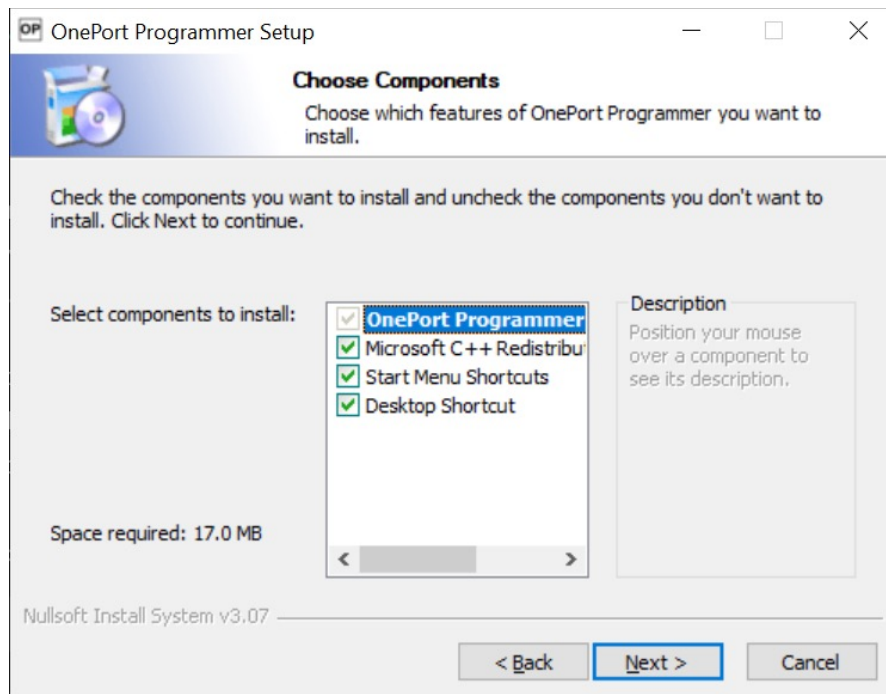
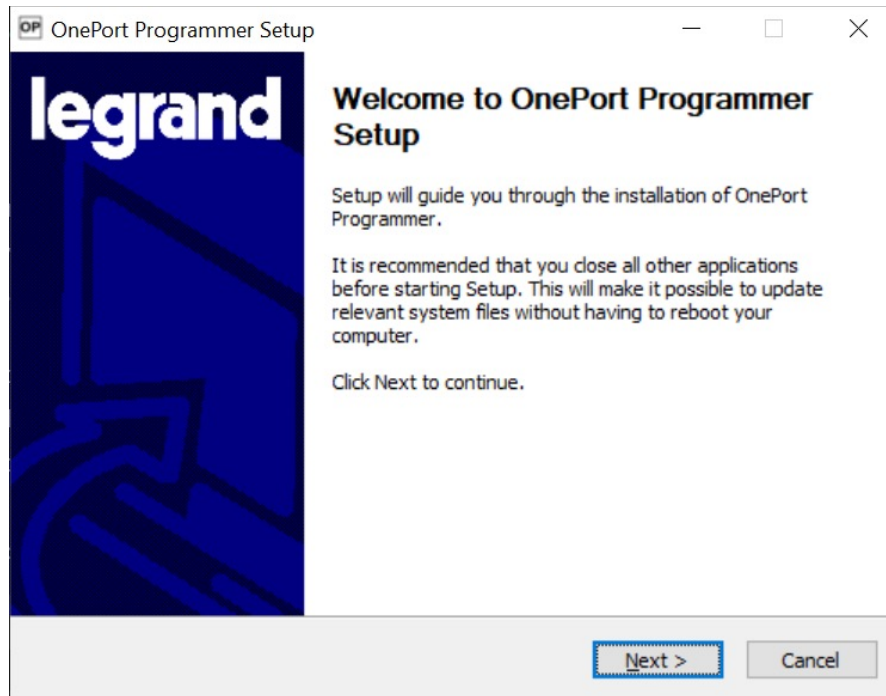
Download the OnePort Programmer software from: approvednetworks.com/oneport-downloads

Extract the contents of OnePort Installer zip file to a convenient folder.

1. Locate the file OnePort Installer in the folder used to extract the files



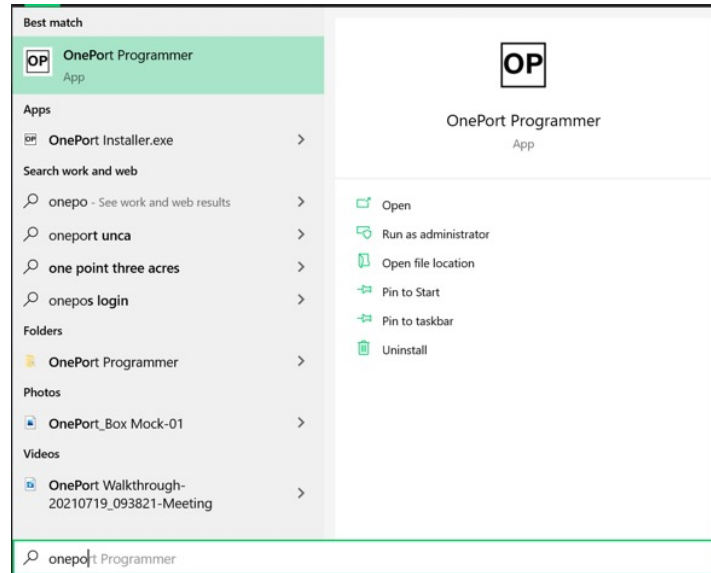
2. Run the OnePort Installer application



(Leave "Microsoft C++ Redistributable Package (x86)" checked as it is a necessary component)

Programming

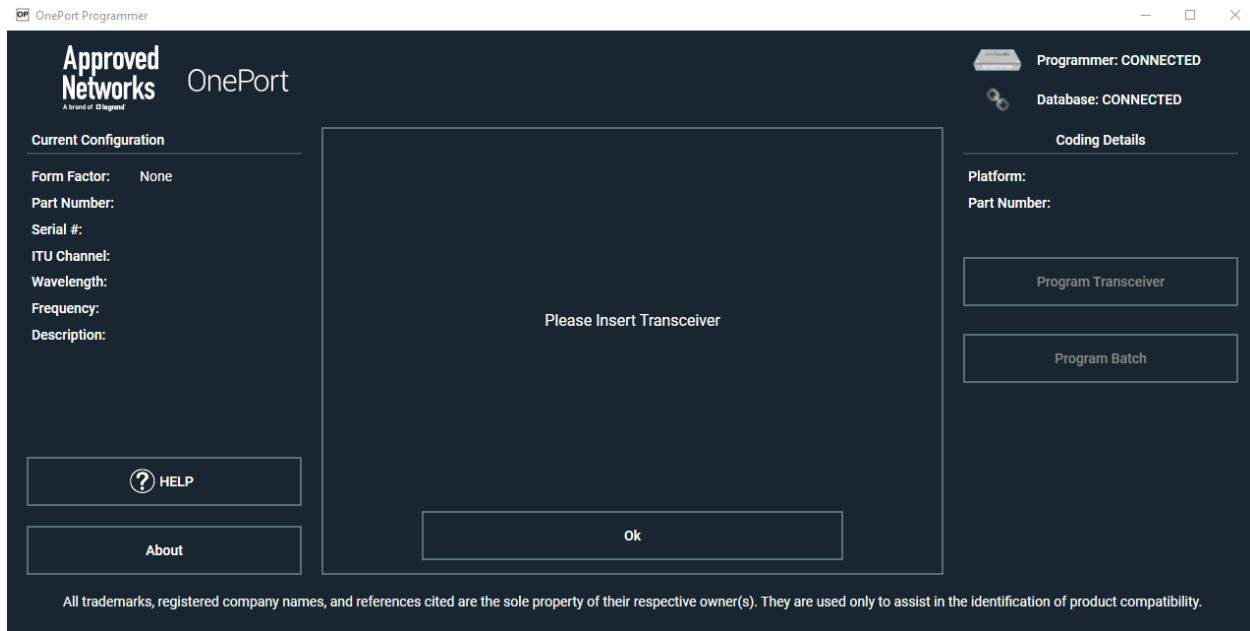
Search for OnePort from the Windows Start Menu and run the application



OnePort Programmer application will start. If it successfully establishes connection to Approved Network's cloud database, the Database status on the upper right corner will read 'Connected'. If it reads 'Disconnected', make sure the computer is connected to the Internet.



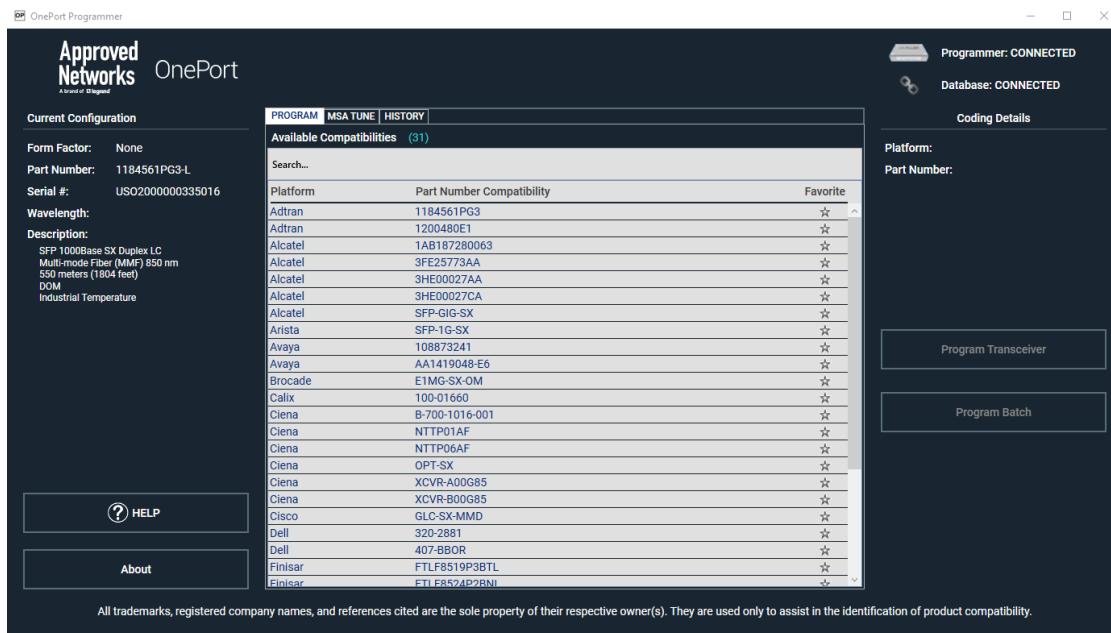
Connect the OnePort Programmer unit to the computer with the included USB cable. The Programmer status will read 'Connected'. If it still reads 'Disconnected', ensure the USB connections are secure and check the troubleshooting section of this guide if necessary.



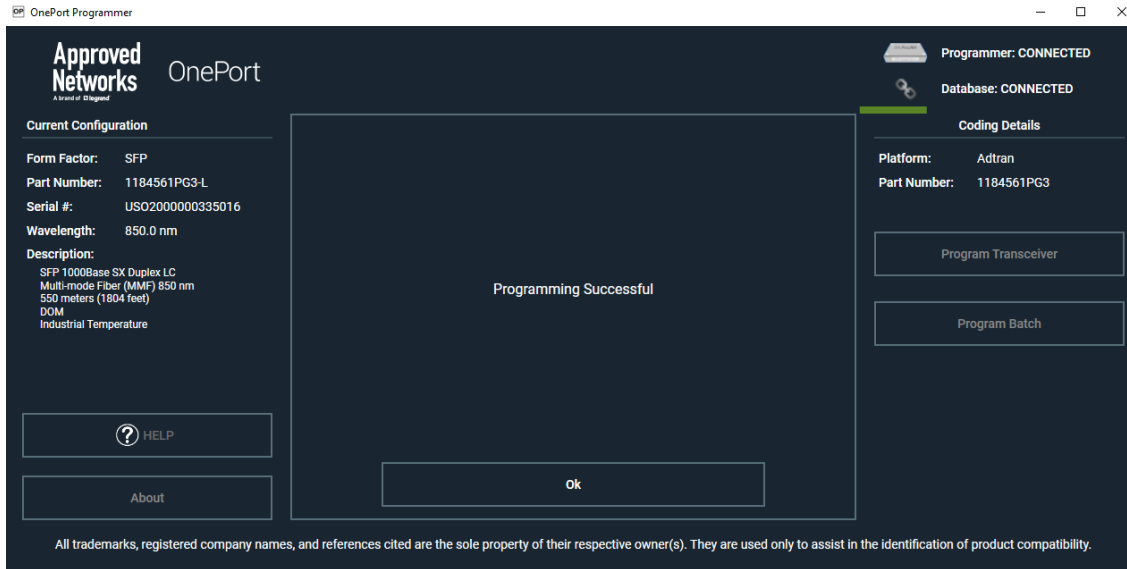
Insert the OnePort Programmable transceiver to be programmed into the SFP, QSFP or XFP slot. Only one transceiver or AOC or DAC can be reprogrammed at a time. Please note that only OnePort compatible transceivers identified with the part numbers starting with 'OP-' or ending with '-OP', can be reprogrammed.

Note: Transceivers with part numbers starting with 'OP-' are MSA-coded from the factory and the ones ending with '-OP' are programmed with a vendor compatibility from the factory.

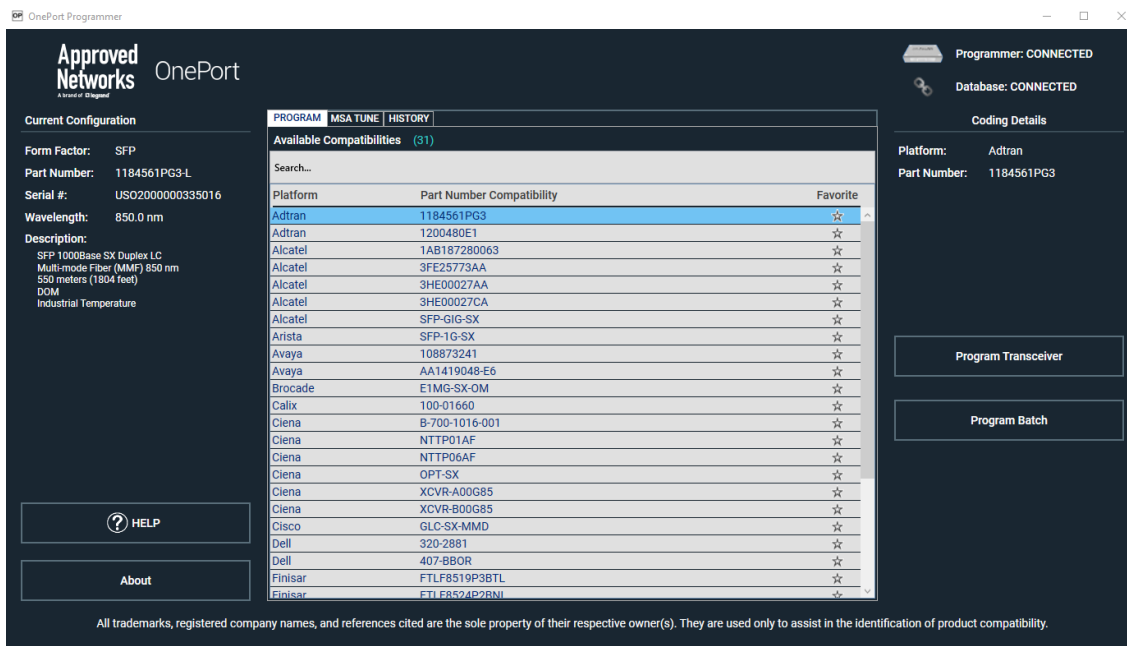
Depending on the transceiver inserted, the software downloads all the available compatibilities that the transceiver can be reprogrammed to.



Select the desired platform, double check the selection on the right-hand side, note down the part number under 'Coding Details' and click 'Program transceiver' to start the process. It takes less than half a minute for programming to finish.



Confirm successful programming by verifying that the Part Number on the left-hand side matches with the part number chosen and noted down prior to programming.



Batch programming:

To program more than one transceiver with the same compatibility, use the 'Program Batch' button to start the programming process.



After successful programming of the first transceiver, the program waits for the next transceiver to be inserted.



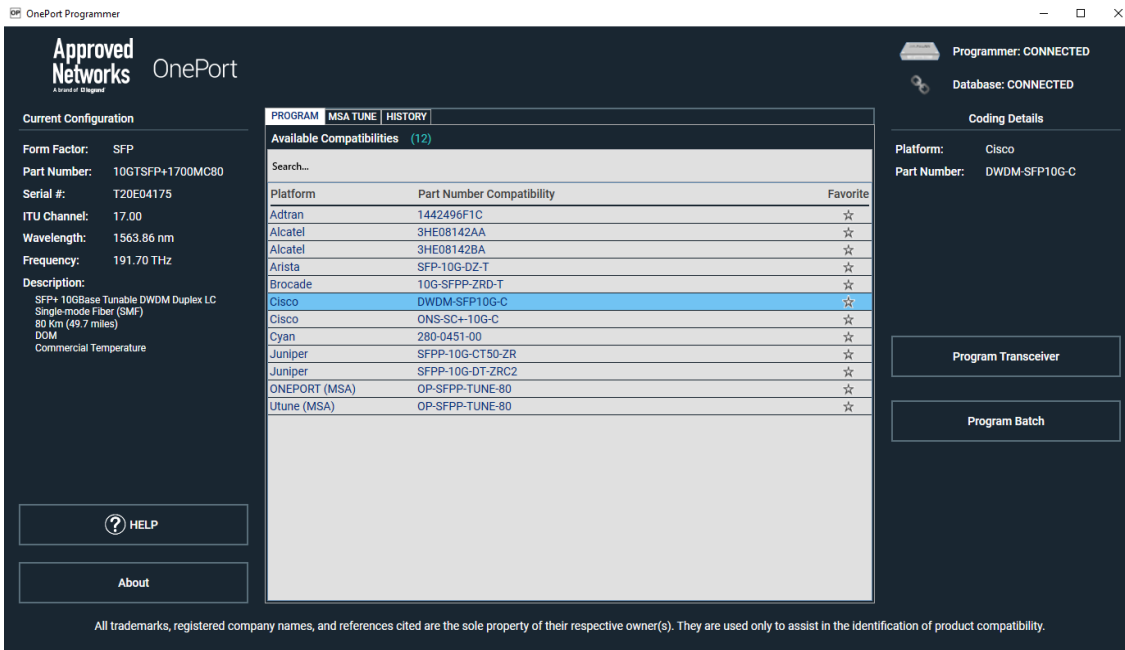
When finished with the last one, press the End Batch button to conclude batch programming.

Tunable Transceivers:

Tunable transceivers can be programmed just like programming a non-tunable transceiver or they can be tuned to a specific channel with our MSA-Tune feature.

Programming:

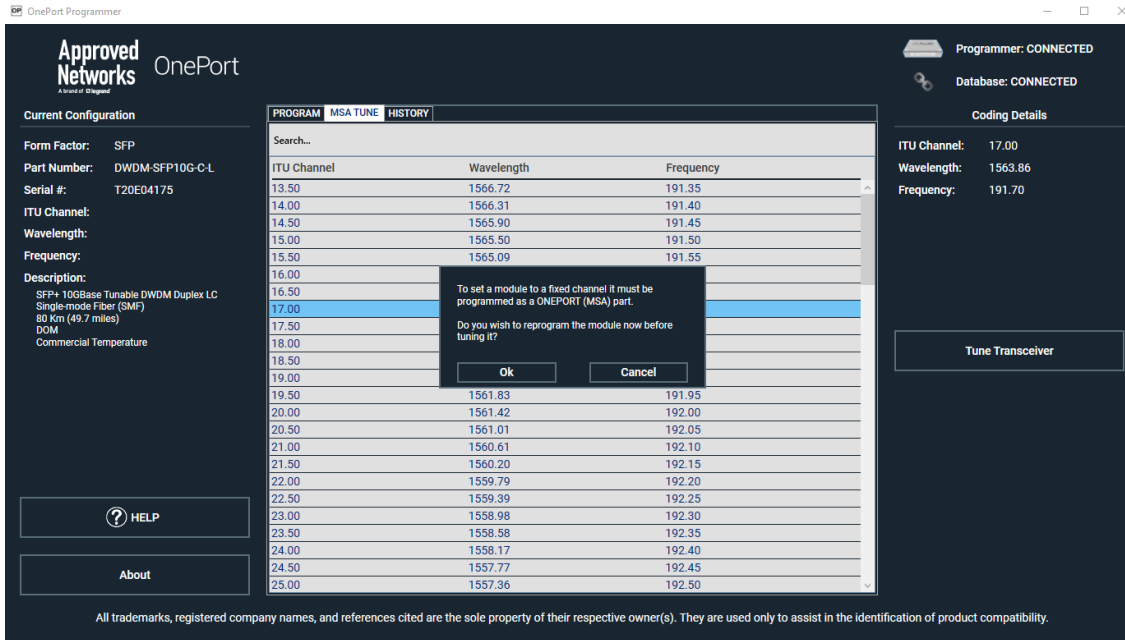
Select the desired platform, double check the selection on the right-hand side, note down the part number under 'Coding Details' and click 'Program transceiver' to start the process. It takes less than half a minute for programming to finish.



Confirm successful programming by verifying that the Part Number on the left-hand side matches with the part number chosen and noted down prior to programming.

Tuning:

To tune the transceiver, you must first ensure that it is programmed as a "ONEPORT (MSA) OP-SFPP-TUNE-80" If it is not, when you select your channel and go to tune it will show the pop-up window below and allow the application to reprogram the transceiver before tuning it.

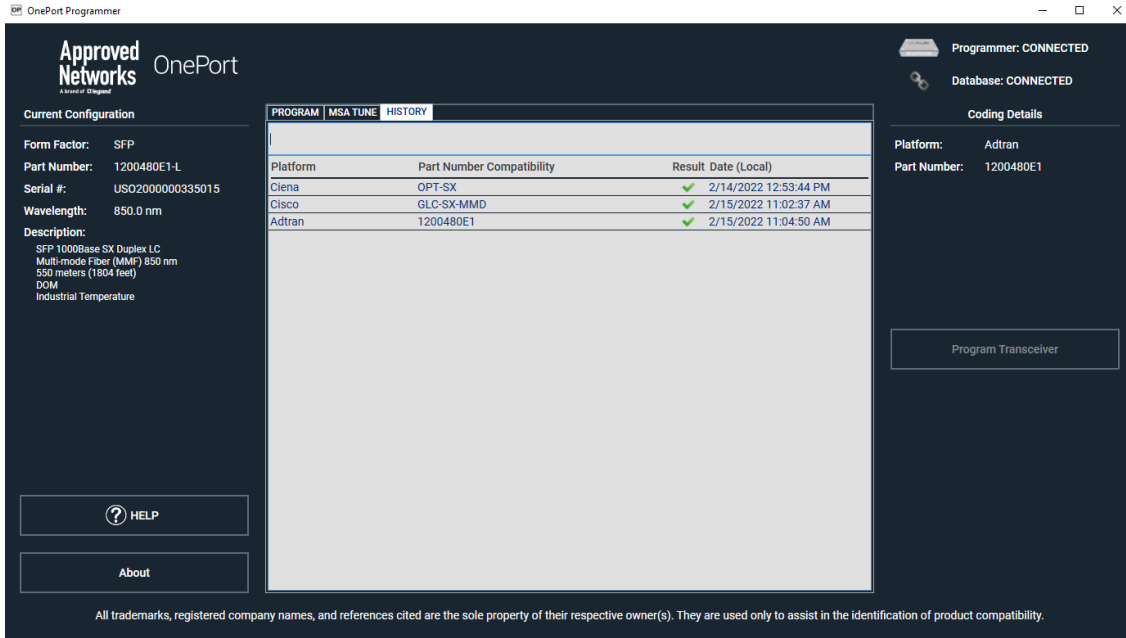


If it is already in the ONEPORT (MSA) format no reprogramming is necessary and the application will tune the transceiver to the selected channel. Once tuning is completed the new ITU channel will show in the part number to the left.



History:

As the transceivers are programmed the history is capture and can be displayed under the history table.



Troubleshooting:

If the OnePort Programmer unit is not recognized by the software, check if Device Manager has OnePort listed under Universal Serial Bus devices. If not, please contact your sales rep or Support@approvednetworks.com for any support.

